

ALLROUNDER 320 C

GOLDEN EDITION

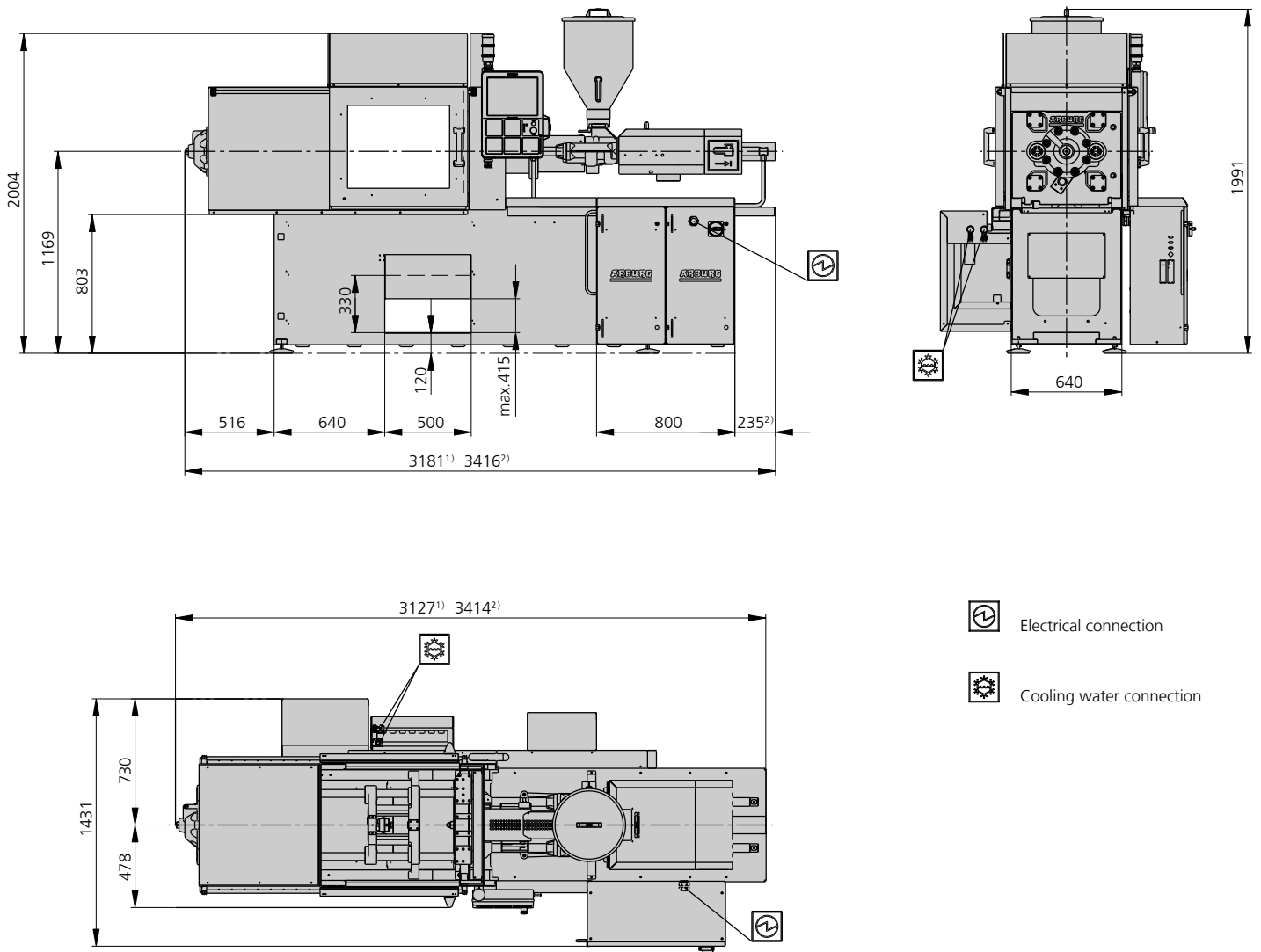
Distance between tie bars: 320 x 320 mm

Clamping force: 500 kN

Injection unit (acc. to EUROMAP): 100, 170

ARBURG

MACHINE DIMENSIONS | 320 C GOLDEN EDITION



Electrical connection



Cooling water connection

1) Injection unit 100
2) Injection unit 170

TECHNICAL DATA | 320 C GOLDEN EDITION

Clamping unit		320 C GOLDEN EDITION	
with clamping force	max. kN	500	
Opening force stroke	max. kN mm	130 350	
Mould height, fixed variable	min. mm	200 ---	
Platen daylight fixed variable	max. mm	550 ---	
Distance between tie bars (w x h)	mm	320 x 320	
Mould mounting platens (w x h)	max. mm	446 x 446	
Weight of movable mould half	max. kg	180	
Ejector force stroke	max. kN mm	30 125	
Dry cycle time EUROMAP ²	min. s - mm	1,3 - 224	

Injection unit		100			170		
with screw diameter	mm	20	25	30	25	30	35
Effective screw length	L/D	25	20	16,7	24	20	17
Screw stroke	max. mm	100			120		
Calculated stroke volume	max. cm ³	31	49	71	59	85	115
Shot weight	max. g PS	29	45	65	54	77	105
Material throughput	max. kg/h PS	5,5	8	9,5	10	13,5	16
	max. kg/h PA6.6	2,8	4	4,9	5	7	8
Injection pressure	max. bar	2500	2000	1390	2500	2000	1470
Holding pressure	max. bar	2500	2000	1390	2500	2000	1470
Injection flow ²	max. cm ³ /s	64	100	146	66	96	132
Screw circumferential speed ²	max. m/min	28	35	42	35	42	49
Screw torque	max. Nm	120	150	180	210	250	290
Nozzle contact force retraction stroke	max. kN mm	50 180			50 210		
Heating capacity zones	kW	4,9 5			9,4 5		
Feed hopper	l	50			50		

Drive and connection		2 pumps	
with injection unit		100	170
Net weight of machine	kg	2250	2300
Sound press. level Insecurity ⁴	dB(A)	68 3	
Oil filling	l	165	
Drive power ²	max. kW	11	11
Electrical connection ³	kW	19	22
	Total	A	63
	Machine	A	---
Cooling water connection	max. °C	30	
	min. Δp bar	1,5 DN 25	

Machine type

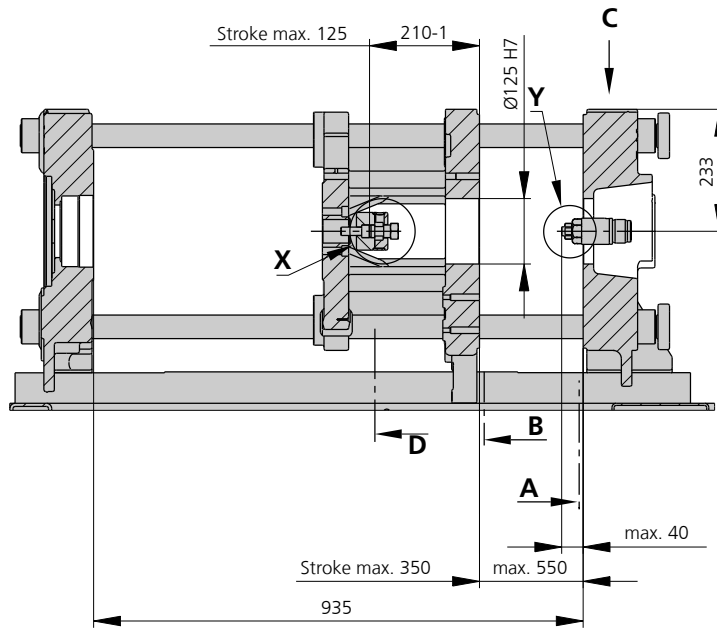
with EUROMAP size designation ¹

320 C GOLDEN EDITION 500-100 | 170

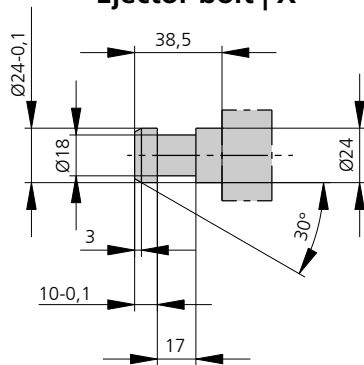
All specifications relate to the basic machine version. Deviations are possible depending on variants, process settings and material type. Depending on the drive, certain combinations, e.g. max. injection pressure and max. injection flow may be mutually exclusive.

- 1) Clamping force (kN) - size of injection unit = max. stroke volume (cm³) x max. injection pressure (kbar)
 - 2) Specifications depend on the drive variant / drive configuration.
 - 3) Specifications relate to 400 V/50 Hz.
 - 4) Detailed info in the operating instr.
- [] Specifications apply to alternative equipment.

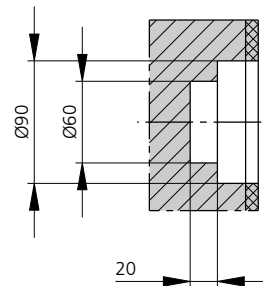
MOULD INSTALLATION DIMENSIONS | 320 C GOLDEN EDITION



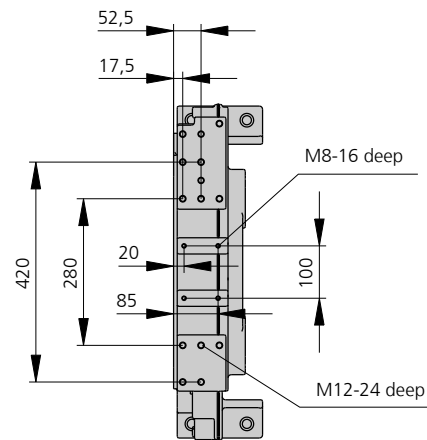
Ejector bolt | X



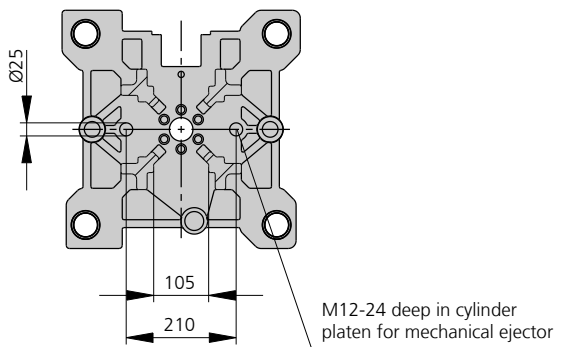
Bore in mould (if required) | Y



Robotic system mounting | C

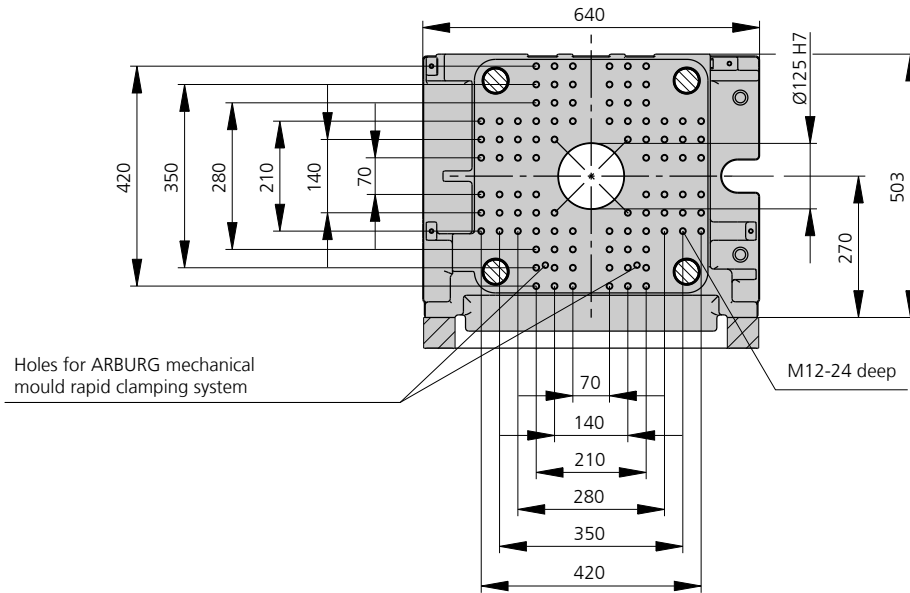


View | D

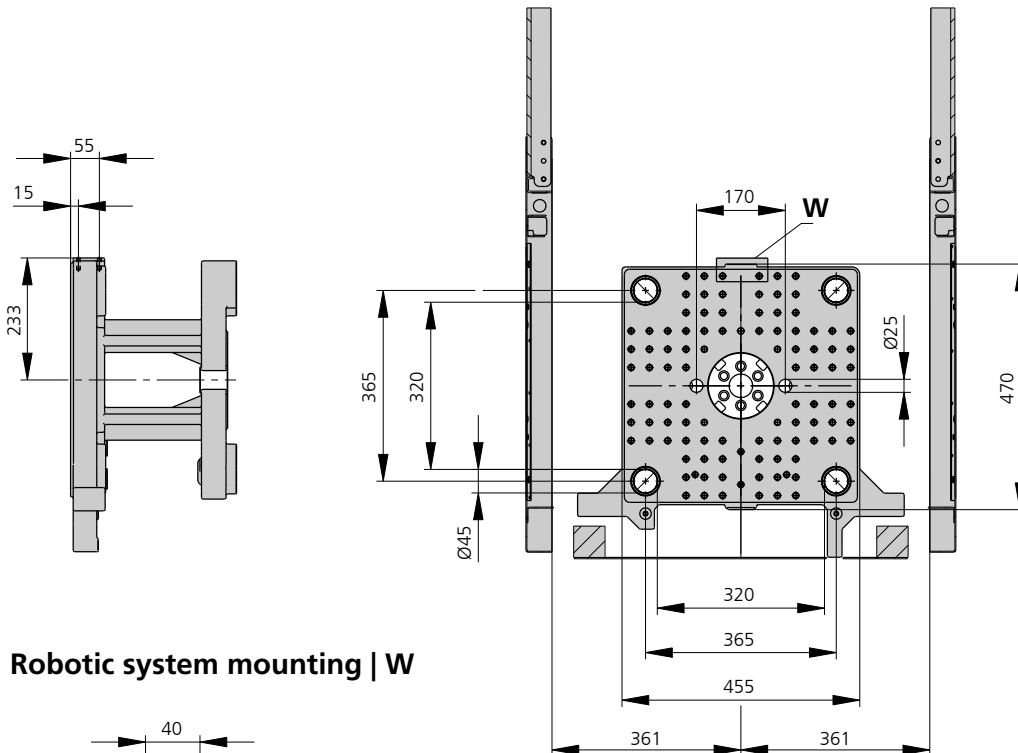


MOULD INSTALLATION DIMENSIONS | 320 C GOLDEN EDITION

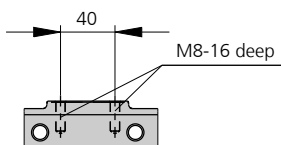
Fixed mould mounting platen | A



Moving mould mounting platen | B



Robotic system mounting | W



SHOT WEIGHTS | 320 C GOLDEN EDITION

Theoretical shot weights for the most important injection moulding materials

Injection units according to EUROMAP		100			170		
Screw diameter	mm	20	25	30	25	30	35
Polystyrene	max. g PS	29	45	65	54	77	105
Styrene heteropolymerizates	max. g SB	28	44	63	53	76	103
	max. g SAN, ABS ¹⁾	27	43	62	52	74	101
Cellulose acetate	max. g CA ¹⁾	32	50	73	61	87	119
Celluloseacetobutyrate	max. g CAB ¹⁾	30	47	68	56	81	110
Polymethyl methacrylate	max. g PMMA	30	46	67	56	80	109
Polyphenylene ether, mod.	max. g PPE	27	42	60	50	72	98
Polycarbonate	max. g PC	30	47	68	57	81	111
Polysulphone	max. g PSU	31	49	70	58	84	115
Polyamides	max. g PA 6.6 PA 6 ¹⁾	28	44	64	53	77	104
	max. g PA 6.10 PA 11 ¹⁾	26	41	60	50	72	98
Polyoximethylene (Polyacetal)	max. g POM	35	55	80	66	96	130
Polyethylene terephthalate	max. g PET	34	53	77	64	92	126
Polyethylene	max. g PE-LD	22	34	49	41	59	80
	max. g PE-HD	22	35	50	42	60	82
Polypropylene	max. g PP	23	36	51	43	62	84
Fluoropolymerides	max. g FEP, PFA, PCTFE ¹⁾	46	72	103	86	124	169
	max. g ETFE	40	63	91	76	109	148
Polyvinyl chloride	max. g PVC-U	35	54	78	65	94	127
	max. g PVC-P ¹⁾	32	50	72	60	87	118

1) average value

ARBURG GmbH + Co KG

Arthur-Hehl-Strasse
72290 Lossburg
Tel.: +49 7446 33-0
www.arburg.com
contact@arburg.com